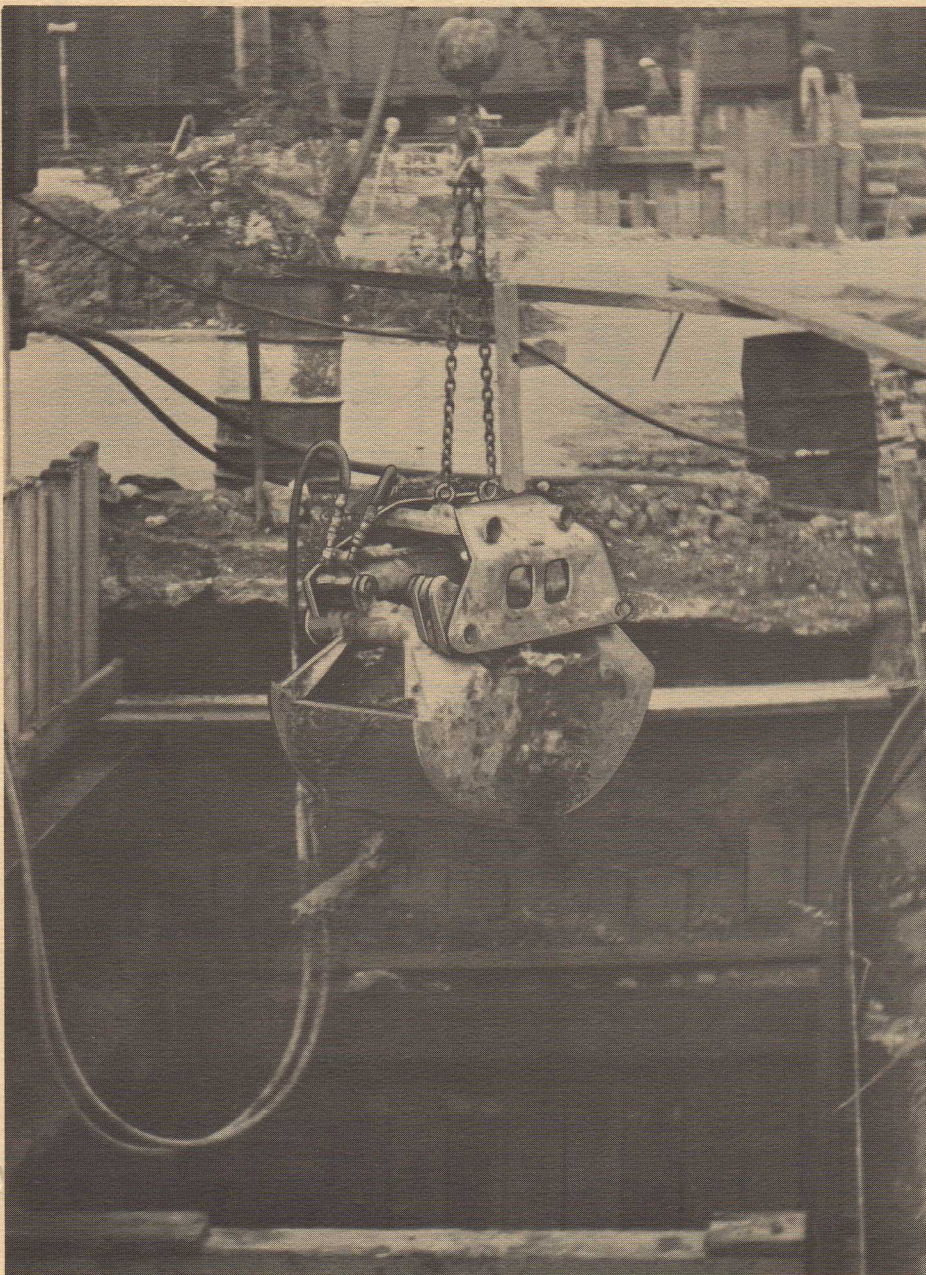


OWEN



Model MHC CRANE TYPE GENERAL PURPOSE CLAMSHELL BUCKETS



OWEN Crane Type Hydraulic Clamshell Buckets are built to the same rugged standards that have made OWEN cable operated equipment the most readily recognized and accepted in the industry. They are designed for average excavating, bulk material rehandling, and similar contractor work.

These general purpose buckets are of all welded construction. A single large double-acting cylinder keeps hose requirements to a minimum... mechanical linkage synchronizes the closing action and provides equal power to both scoops. All moving parts are lubricated and bushed, and the cylinder is protected from contamination. Other features include low headroom; high power design; oversize main shafts; heat treated cast alloy teeth; tag line rings are provided on both scoops.

Specifications for standard size OWEN Crane Type Hydraulic Clamshell Buckets are shown on the reverse side of this page. Should you require a size of hydraulic attachment... or other types than those shown, our engineering department welcomes the opportunity to work with you to develop a unit that meets your specific requirements. Our knowledge and experience is available to you for product development.

In addition to the crane type hydraulic buckets, Anvil manufactures a complete line of hydraulic clamshell buckets, grapples, and grabs for use with hydraulic backhoe equipment.

